

Window Vision

- ◇ Window Vision is state-of-the-art Digital Surveillance. This full-featured PC based system, including digital recording and remote access, offers simplicity without sacrifice.
- ◇ Our Systems feature digital recording (local and remote), motion detection, no signal detection, remote monitoring of up to 16 cameras simultaneously, PTZ Support, user defined program access, audio recording, scheduler, true multi-user capability, POS Interface, Multi-Host Remote and more.

Easy Access to

Powerful Features

- ◇ System upgrades are available approximately every 90 days at no additional cost. The "Upgrade Software" feature enables the end user to upgrade their own software with a few simple mouse clicks.
- ◇ Window Vision Remote™ software is included as part of the system, and gives you the freedom to monitor your home or business from anywhere in the world! Video can be transmitted over standard phone lines, networked computers (LAN) and the Internet. The choice is yours!

Digital CCTV Doesn't Get Easier!

Window Vision™ III System Features



16 Camera view

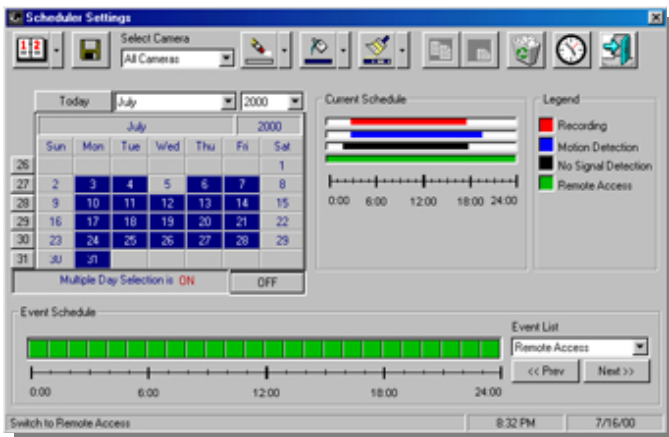
Viewing Options

In any view, cameras being displayed may be switched with one click of the mouse. All Views are available on both Host and Remote.

Multi-pane view: (shown above) Up to sixteen cameras displayed simultaneously. Four pane view: Four cameras can be viewed simultaneously (in larger format). Single pane view: A single camera is displayed in maximum size.

Each view is full-screen capable

Scheduled Events



The scheduler automatically enable/disable motion detection, recording, remote access, etc. This easy to use interface adds flexibility to an

already intuitive system.

View, Transmit and Record

From 1 to 16 cameras simultaneously.

Remote Transmission

Over standard phone lines, networked computers and Internet via TCP/IP network protocol.

Remote Control

Enable Recording, Switch camera views, reset alarms, change alarm settings and view files recorded on either the remote or host system.

Motion Detection

Each camera detects motion at individually defined levels with no additional hardware required. Cameras can be set to ignore motion in predefined areas by blocking out grid sections as shown below.

No Signal Detection

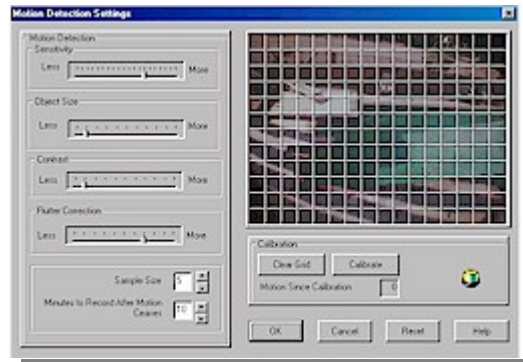
System can be set to alert user when a camera is no longer sending a signal.

Call Out on Alarm Condition

When Motion or No Signal is detected, up to 2 phone numbers and 1 pager number can be called and a notification message will be played. Calls will be placed until alarms have been reset. Alarms may be shut off at the remote or host computer.

Point of Sale Interface

Log and track events from POS terminals. Search for corresponding video by clicking on searchable event.



Motion Detection Settings Window

Window Vision™ III System Features



Global Record Settings

Digital Recording

Record in color or B&W. Up to 16 cameras can be recorded to disk simultaneously and stored in a date/time stamped file for easy retrieval. Both host and remote will record to all hard drives and mapped network drives. Files are saved in a non-editable, proprietary format for use in court.

Recording Options

1) Stop when recording reaches the end of user-define disk space.

2) Circular Recording: System may be set to go back to the beginning of the file and record over previous recording so that the last 3-30 days will always be maintained.

3) Record Remotely: Remote computer may record incoming video.

4) Record During Transmission: The host can display and record all cameras while simultaneously transmitting to remote system.

Archiving

Selected sections of recordings may be archived for transfer to other computers to prevent overwriting of valuable data. Data can be written directly to CDRW.

◇ **Audio** — Records audio from one location to the Host system.

10x Digital Pan/Tilt/Zoom

All Cameras have Digital PTZ Support.

Camera Pan/Tilt/Zoom

Host and Remote control of PTZ cameras. Pelco,

Kaletel, Sensormatic, and other PTZ protocols are supported.

Display Options

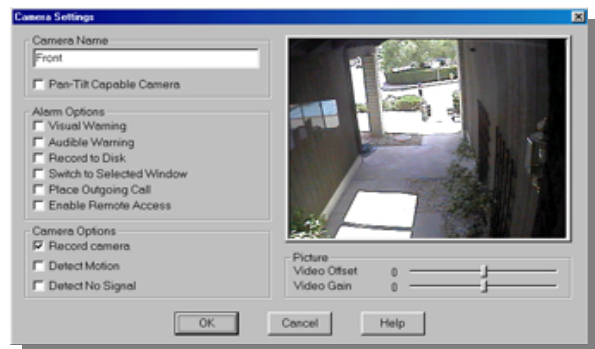
Each camera may be adjusted individually for video gain and video offset which affects brightness and contrast.

User Defined Password Protection

Both Host and Remote have Administrator Password Protection. Additionally, **Unlimited Users** can be added to the Host. Each user can be given permission to specific program access and camera views.

Multi-user

Optional Multi-user licensing is available. The multi-user license allows more than one simultaneous remote connection.



Camera Settings Window

Status Log

Status Log is provided on both the host and remote systems. Displays and prints recent events.

Snapshot with Date/Time Stamp

User may take a snapshot from any camera during view, record or playback mode at host or remote computer. Snapshots are date/time stamped. Complete with image enhancement and enlargement. Snapshots can be printed or saved.

Accelerate/Set Camera Priority

Applies maximum frame rate to the selected camera. The system restores previous camera settings when decelerated. Setting Camera priority allows user definition of camera frame rate.